

Wildcat Moon Miners

Victor O. Tenorio, Ph.D. vtenorio@arizona.edu (520) 548-3334

Kerst Kingsbury kerstk@email.arizona.edu

Kate Willa Brown katebrown@email.arizona.edu

James Nickels jslekcin@email.arizona.edu

Gatlan Nail gatlannail@email.arizona.edu

Daniel Tolmachoff danieltolmachoff@email.arizona.edu



Selenne X-1

Pioneering Moon Mining Camp

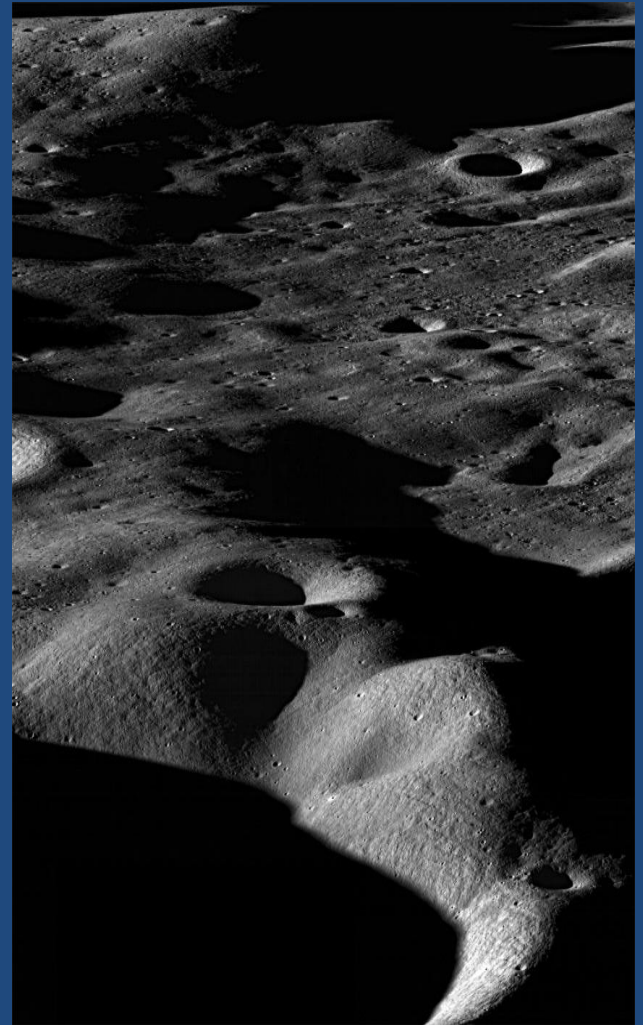
by

*The **Wildcat Moon Miners** Team*

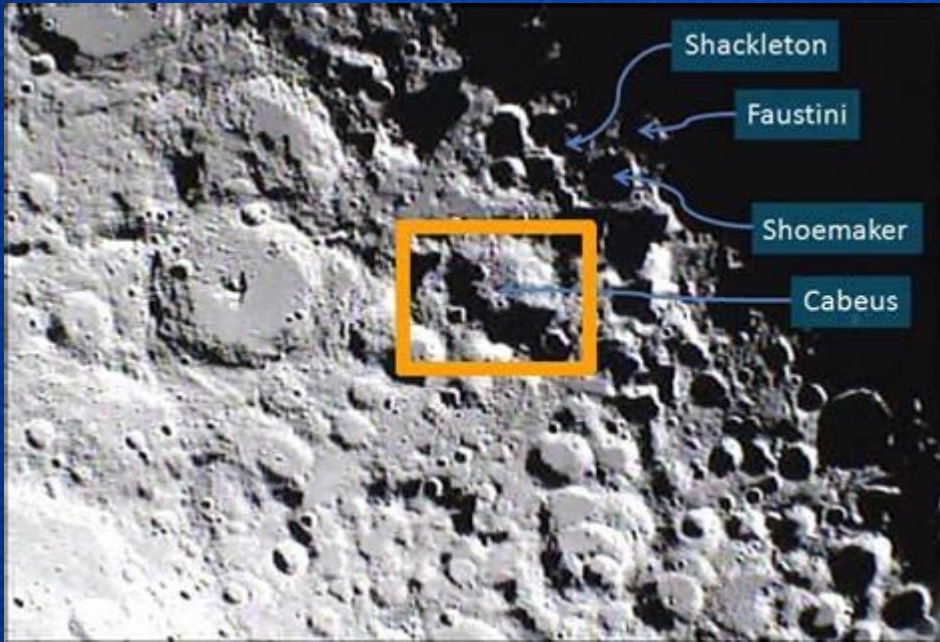
January 2021

Contents

- Overview
- The Concept
- The Name
- The Deposit
- General Layout
- Typical Section of a Building
- Greenhouses
- Plan View
- The Logo
- About the Authors



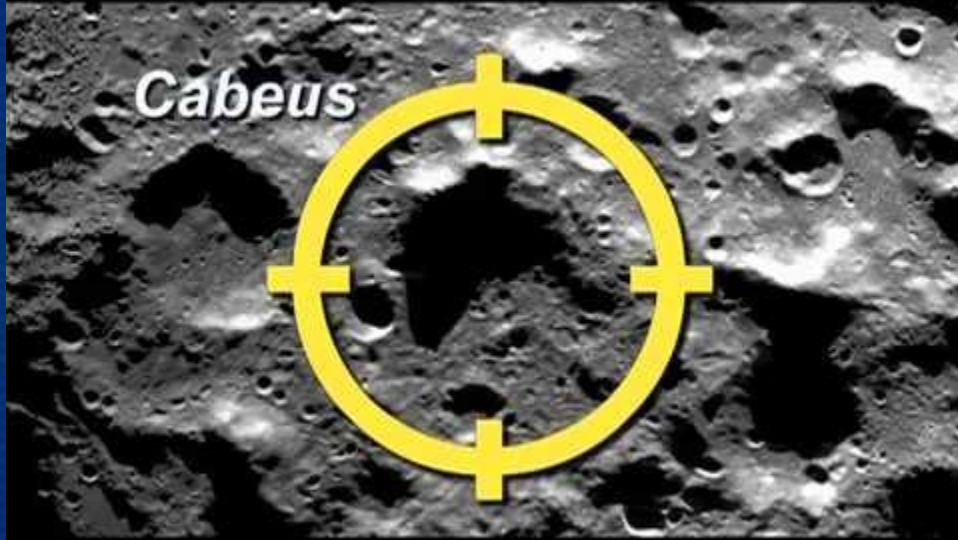
Overview



Crater Cabeus is located at the Permanently Shadowed Region on the South Pole of the Moon.

It is considered one of the target locations for the first settlement of mining operations.

The Concept



The Pioneering Mining Camp shall provide safe shelter to all mining operators while spending a prolonged period of time near the working site.

The location has to be conveniently near the working facilities, as well as bring a view that represents feeling protected and at the same time utilized as a vantage point for visual supervision of operations, uplinks without obstructions, landing pad observation, and follow the displacement of the Sun, Earth and stars at the firmament.

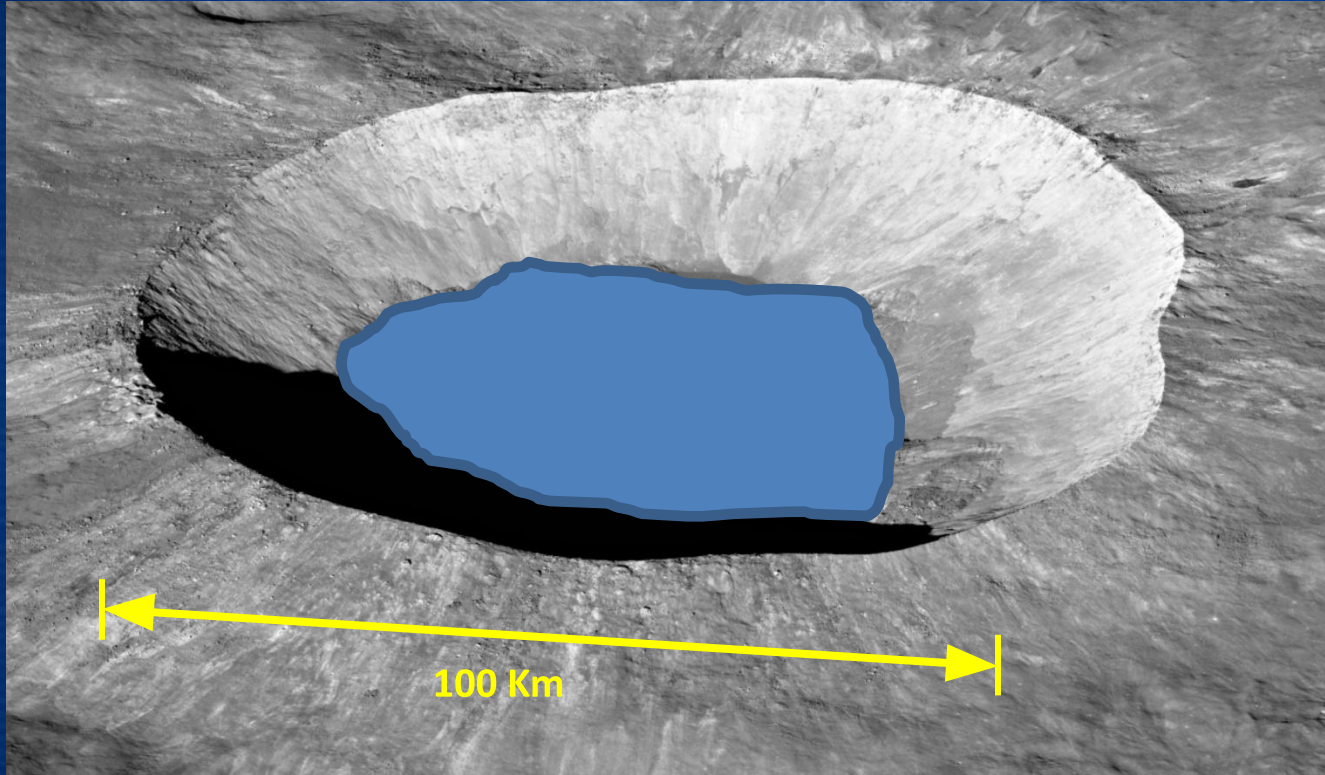
The Name



Selene is a variation of Selene, the Titan Goddess of the Moon. Selene, goddess of the moon, truly represented the moon itself to the Greeks. Although she counts as a goddess in her own right, Selene often gets associated with archer goddess, Artemis, who is also a moon goddess.

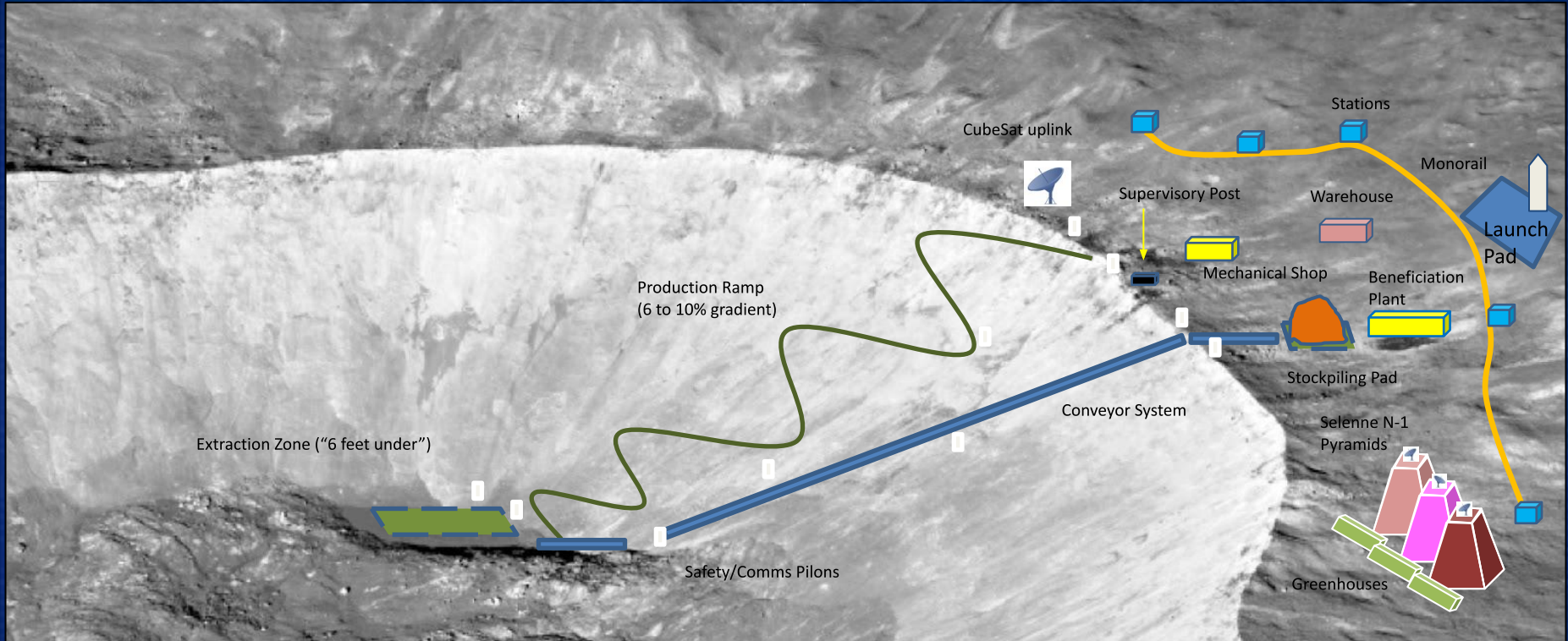
Population of the mining camp will be nicknamed “selennites”, in association with the imagined Moon inhabitants from H.G. Wells’ novel *First Men On The Moon*.

The Deposit



The bottom of the crater seems to contain water ice mixed with regolith. For a controllable mining process, the first estimation is considering a diameter of 50 Km, and a depth of 120 m. Specific weight will be affected by low gravity and the selected equipment for extraction and transportation of the valuable material to the top of the rim for processing.

Mine Camp



10 km.

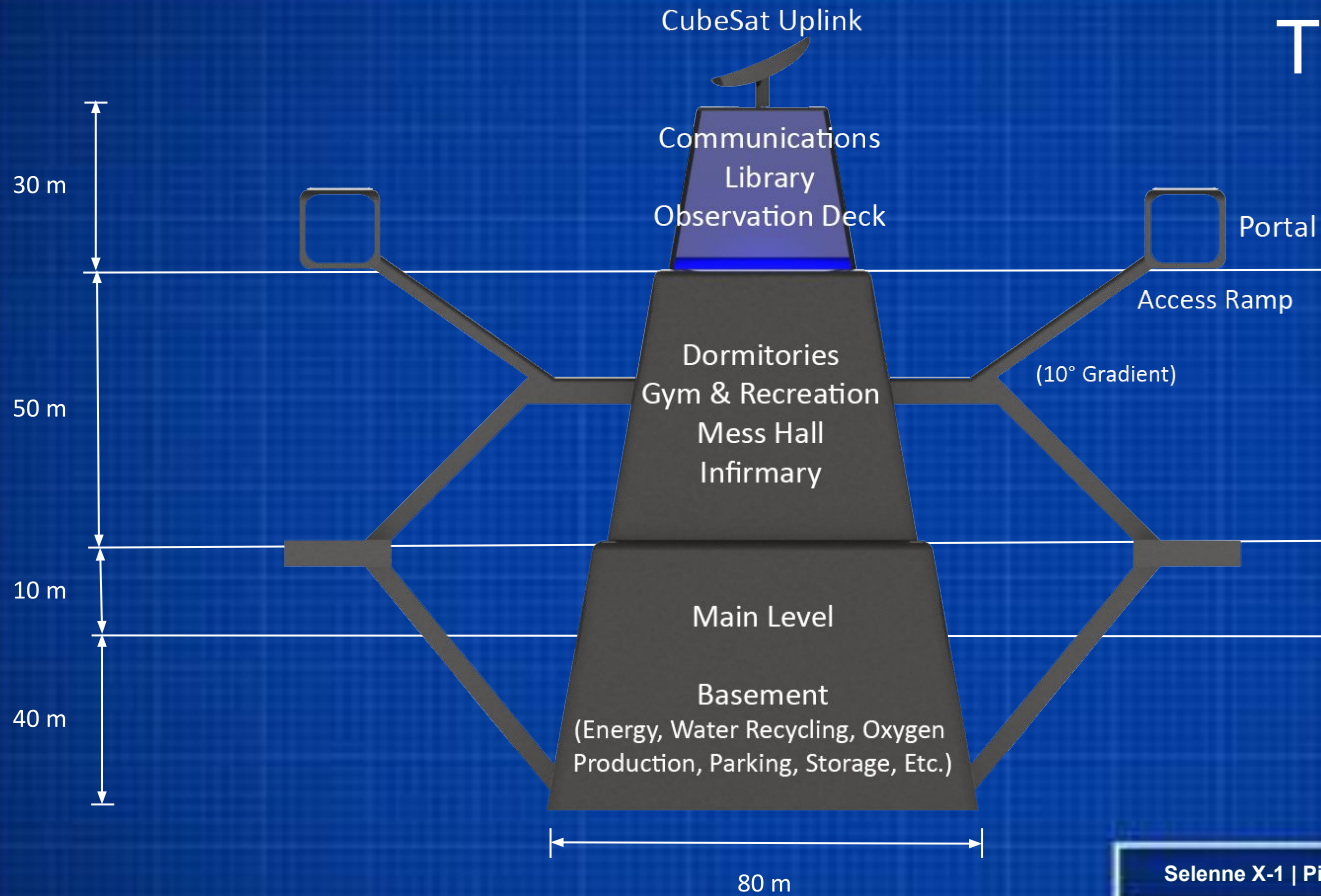
Selenne X-1 | Pioneering Mining Camp

Concept by: Vic-10
January 2021

Mine Camp – General Layout

Sel A-1 005

The Pyramids



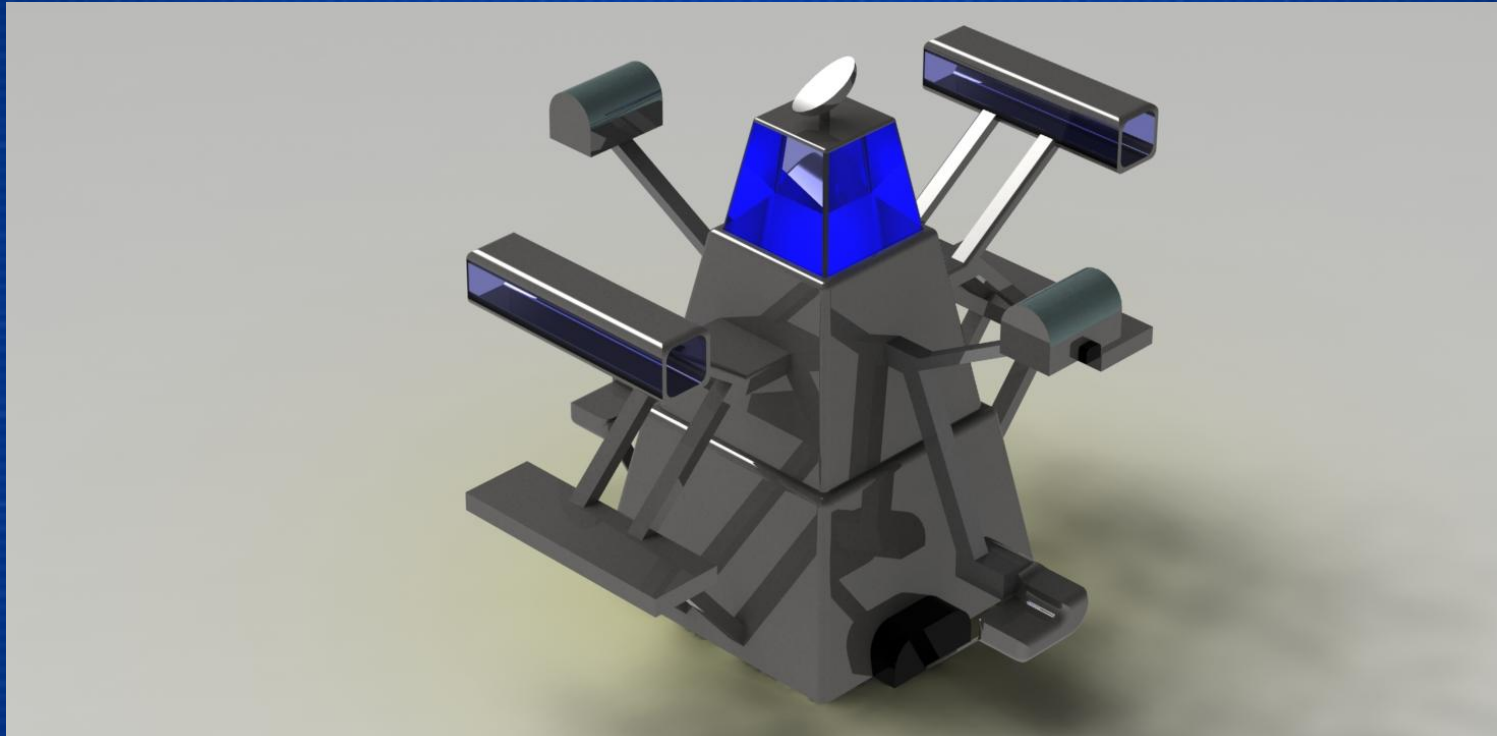
Selenne X-1 | Pioneering Mining Camp

Concept by: Vic-10
January 2021

Pyramid – Typical Section

Sel A-1 006

Isometric View of the Pyramids



Selene X-1 | Pioneering Mining Camp

Concept by: Vic-10
January 2021

Pyramids Isoview

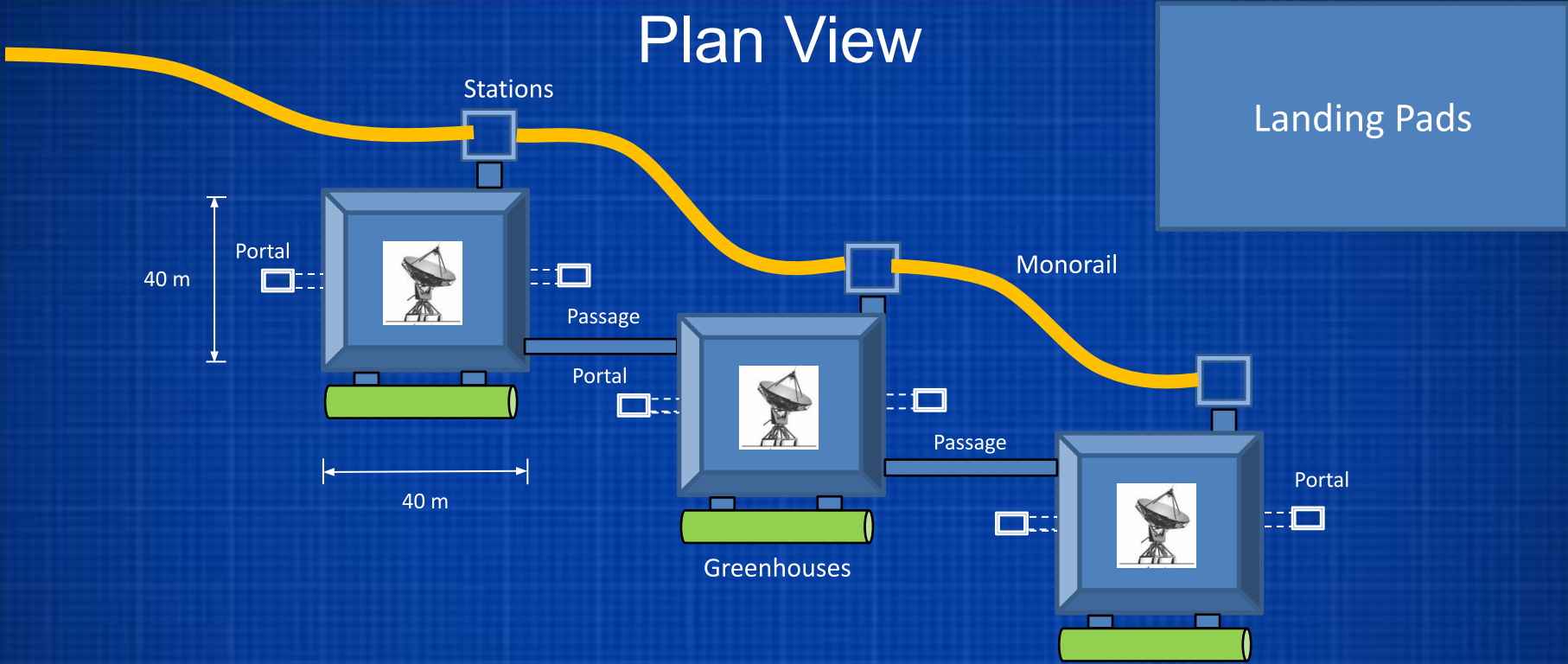
Sel A-1 007

Greenhouses



The experience from Biosphere 2 will provide the basis for the construction of greenhouses on the Moon. One for each pyramid and interconnected among them, these are oxygen generators, vegetable producers for human consumption, and a transit area for walks and rides.

Plan View



Selenne X-1 | Pioneering Mining Camp

Concept by: Vic-10
January 2021

Plan View

Sel A-1 009



Accommodations can provide the feeling of a “Second Home” while spending time for working or visiting the mining site.

Selenne X-1 | Pioneering Mining Camp

Concept by: Vic-10
January 2021

View from Serenity Wing

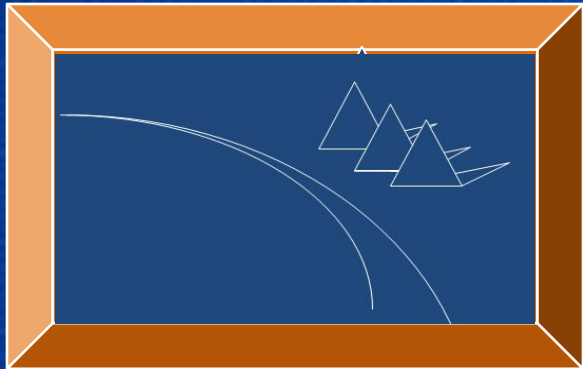
Sel A-1 010



One World - Hall of Flags

This room is the lobby entrance for one of the Selenne Pyramids. It would represent the common place for all countries that visit the Moon, and may help make this feel like a place for strengthening bonds and developing collaborations in the future.

The Logo



The curved lines evoke the crater rim, while the pyramids and their projected shadows are showing the proximity of the construction facilities to the mining operations.

About the Authors



Wildcat Moon Miners

Mine Intelligence Research Group

Department of Mining and Geological Engineering

University of Arizona

vtenorio@arizona.edu



Kerst
Kingsbury



Kate Willa
Brown



Gatlan Nail



James
Nickels



Daniel
Tolmachoff



Victor O. Tenorio, Ph.D.

Selenne X-1 | Pioneering Mining Camp

Concept by: Vic-10
January 2021

The Authors

Sel A-1 013